


## Quality analysis of *Polygala tenuifolia* root by ultrahigh performance liquid chromatography-tandem mass spectrometry and gas chromatography-mass spectrometry

Follow this and additional works at: <https://www.jfda-online.com/journal>

 Part of the [Food Science Commons](#), [Medicinal Chemistry and Pharmaceutics Commons](#), [Pharmacology Commons](#), and the [Toxicology Commons](#)



This work is licensed under a [Creative Commons Attribution-Noncommercial-No Derivative Works 4.0 License](#).

### Recommended Citation

Wu, D.; He, J.; Jiang, Y.; and Yang, B. (2015) "Quality analysis of *Polygala tenuifolia* root by ultrahigh performance liquid chromatography-tandem mass spectrometry and gas chromatography-mass spectrometry," *Journal of Food and Drug Analysis*: Vol. 23 : Iss. 1 , Article 11.

Available at: <https://doi.org/10.1016/j.jfda.2014.07.009>

This Original Article is brought to you for free and open access by Journal of Food and Drug Analysis. It has been accepted for inclusion in Journal of Food and Drug Analysis by an authorized editor of Journal of Food and Drug Analysis.

Available online at [www.sciencedirect.com](http://www.sciencedirect.com)

ScienceDirect

journal homepage: [www.jfda-online.com](http://www.jfda-online.com)

## Original Article

# Quality analysis of *Polygala tenuifolia* root by ultrahigh performance liquid chromatography–tandem mass spectrometry and gas chromatography–mass spectrometry

Dan Wu <sup>a,b,1</sup>, Jirui He <sup>a,b,1</sup>, Yueming Jiang <sup>a</sup>, Bao Yang <sup>a,\*</sup><sup>a</sup> Key Laboratory of Plant Resources Conservation and Sustainable Utilization, South China Botanical Garden, Chinese Academy of Sciences, Guangzhou, China<sup>b</sup> Graduate University of Chinese Academy of Sciences, Beijing, China

## ARTICLE INFO

## Article history:

Received 8 April 2014

Received in revised form

23 July 2014

Accepted 26 July 2014

Available online 5 December 2014

## Keywords:

bioactive compound

gas chromatography–mass spectrometry

*Polygala tenuifolia*

ultrahigh-performance liquid chromatography–tandem mass spectrometry

## ABSTRACT

*Polygala tenuifolia* root is used as a functional food due to its attractive health benefits. In this study, ultrahigh-performance liquid chromatography–tandem mass spectrometry (UPLC-MS/MS) and gas chromatography–mass spectrometry (GC-MS) were utilized to characterize the bioactive compounds in *P. tenuifolia* root. The UPLC-MS/MS information revealed 36 bioactive compounds, including oligosaccharide esters, polygalasaponins, and polygalaxanthones. GC-MS identified 34 volatile compounds with fatty acids as the main chemicals. The leading compound judged by UPLC-MS/MS was tenuifolioside A, and oleic acid was the leading volatile from GC-MS profiles. All samples tested showed similar bioactive compound compositions, but the level of each compound varied. Principal component analysis revealed the principal bioactive compounds with significant level variations between samples. These principal chemicals could be used for quality judgment of *P. tenuifolia* root, instead of measuring the levels of all compositional compounds.

Copyright © 2014, Food and Drug Administration, Taiwan. Published by Elsevier Taiwan

LLC. Open access under [CC BY-NC-ND license](https://creativecommons.org/licenses/by-nc-nd/4.0/).

## 1. Introduction

The genus *Polygala* includes herbaceous plants, shrubs, and small trees, which are distributed over the world. Some *Polygala*

species are used in functional foods and folk medicines against inflammation and disorders of the central nervous system [1]. As a widely used medicinal plant, *Polygala tenuifolia* has attracted much attention due to its good pharmaceutical properties against insomnia, neurosis, and dementia [2].

\* Corresponding author. Key Laboratory of Plant Resources Conservation and Sustainable Utilization, South China Botanical Garden, Chinese Academy of Sciences, 723 Xingke Road, Tianhe District, Guangzhou 510650, China.

E-mail address: [yangbao@scbg.ac.cn](mailto:yangbao@scbg.ac.cn) (B. Yang).

<sup>1</sup> Both authors contributed equally to this paper.

<http://dx.doi.org/10.1016/j.jfda.2014.07.009>

1021-9498/Copyright © 2014, Food and Drug Administration, Taiwan. Published by Elsevier Taiwan LLC. Open access under [CC BY-NC-ND license](https://creativecommons.org/licenses/by-nc-nd/4.0/).

Moreover, *P. tenuifolia* root can attenuate cognitive dysfunction and relieve depression [3,4]. As cognitive dysfunction and depression are common disorders, the preventative effect of *P. tenuifolia* root has attracted much interest by scientists in the functional food field. Many functional food products formulated with *P. tenuifolia* root have been developed.

Natural bioactive compounds, such as phenolics and carbohydrates, are responsible for the pharmaceutical activities of medicinal herbs [5,6]. It has been reported that oligosaccharides, saponins, and xanthenes in *P. tenuifolia* root are critical chemicals involved in disease treatment and health benefits [7]. The antidepressant effect is mainly attributed to the occurrence of oligosaccharide esters, such as 3,6'-disinapolysucrose. Polygalasaponins possess good capability against cognitive impairments [8]. Xanthenes have diverse biological profiles, including anticancer, antihypertension, and antioxidation [9]. It is obvious that the bioactive compound composition determines the quality of *P. tenuifolia* root. More than 200 chemicals have been identified from the *Polygala* genus. However, the chemical composition of *P. tenuifolia* root is still not clear. Determination of phytochemical profile by ultrahigh-performance liquid chromatography–tandem mass spectrometry (UPLC-MS/MS) and gas chromatography–mass spectrometry (GC-MS) is a good choice to understand the chemistry nature of medicinal plant.

Metabolomics is being increasingly utilized to gain insight into the chemical composition of biological materials [10]. Two types of analytical techniques, based on MS and nuclear magnetic resonance spectroscopy (NMR), are widely applied in metabolomics. The MS technique shows better precision and resolution than NMR. Therefore, in this work, the bioactive compounds profile of *P. tenuifolia* root was analyzed using both UPLC-MS/MS and GC-MS. It is useful to judge the quality of commercial *P. tenuifolia* root.

## 2. Materials and methods

### 2.1. Plant material

Four *P. tenuifolia* roots were collected from Sanmenxia in Henan province (Roots 1 and 2) and Yuncheng in Shanxi province (Roots 3 and 4). Each sample was pulverized into powder and screened through a 60-mesh sieve.

### 2.2. UPLC-MS/MS analysis

Two grams of *P. tenuifolia* root powder were extracted with 20 mL of methanol for 1 week in the dark at room temperature. The extract was centrifuged at  $8000 \times g$  for 10 minutes. Each sample was extracted in triplicate. The supernatant was collected and subjected to UPLC-MS/MS analysis. Acquity UPLC equipped with a BEH C18 column (1.7  $\mu\text{m}$ , 2.1 mm  $\times$  150 mm; Waters, Milford, MA, USA) was used for chemicals isolation. A gradient elution program was conducted as follows: 0–45 minutes, from 5% to 50% solvent B; 45–48 minutes, from 50% to 100% solvent B; 48–51 minutes, and from 100% to 5% solvent B; 51–53 minutes, 5% solvent B. The flow rate was 0.25 mL/min. Solvent A was 0.1% formic acid in water, and solvent B was acetonitrile. Detection was performed on a triple quadrupole mass spectrometer using

an electrospray ionization (ESI) interface. Ionization of the analytes was achieved using ESI in negative mode. The interface conditions were as follows: capillary voltage, 1.0 kV; cone voltage, 10 eV; collision voltage, 10 eV; source temperature, 150°C; desolvation temperature, 500°C; cone gas, nitrogen at a flow rate of 50 L/h; desolvation gas, nitrogen at a flow rate of 800 L/h; collision gas, argon at a flow rate of 0.2 mL/min. Mass scan was set in the range of  $m/z$  50–2000. The daughter ion mode was monitored at a collision voltage of 10–40 eV.

### 2.3. GC-MS analysis

Two grams of *P. tenuifolia* root powder were extracted with 20 mL of hexane/acetone (7:3, v/v) for 1 week in the dark at room temperature. The extracts were centrifuged at  $8000 \times g$  for 15 minutes. The supernatants were collected and subjected to trimethylsilyl derivatization due to the occurrence of fatty acids following the method of Yang et al [11]. A gas chromatography/mass spectrometer (GCMS-QP 2010; Shimadzu, Kyoto, Japan) was used to analyze the chemical composition. The derivatives were loaded into a RTX-5 capillary column. The temperature program was set as follows: the initial temperature of column was 50°C, holding for 1 minute, increasing to 250°C at 3°C/min, holding for 17 minutes, and increasing to 280°C at 10°C/min; injection temperature: 250°C. The ion source of the mass spectrometer was set at 250°C. The scanning  $m/z$  range was 20–550 atomic mass units. A 1- $\mu\text{L}$  aliquot of sample was injected and the split ratio was 10:1. The carrier gas was helium with a flow rate of 1.0 mL/min. The peaks were identified using the NIST database and retention index.

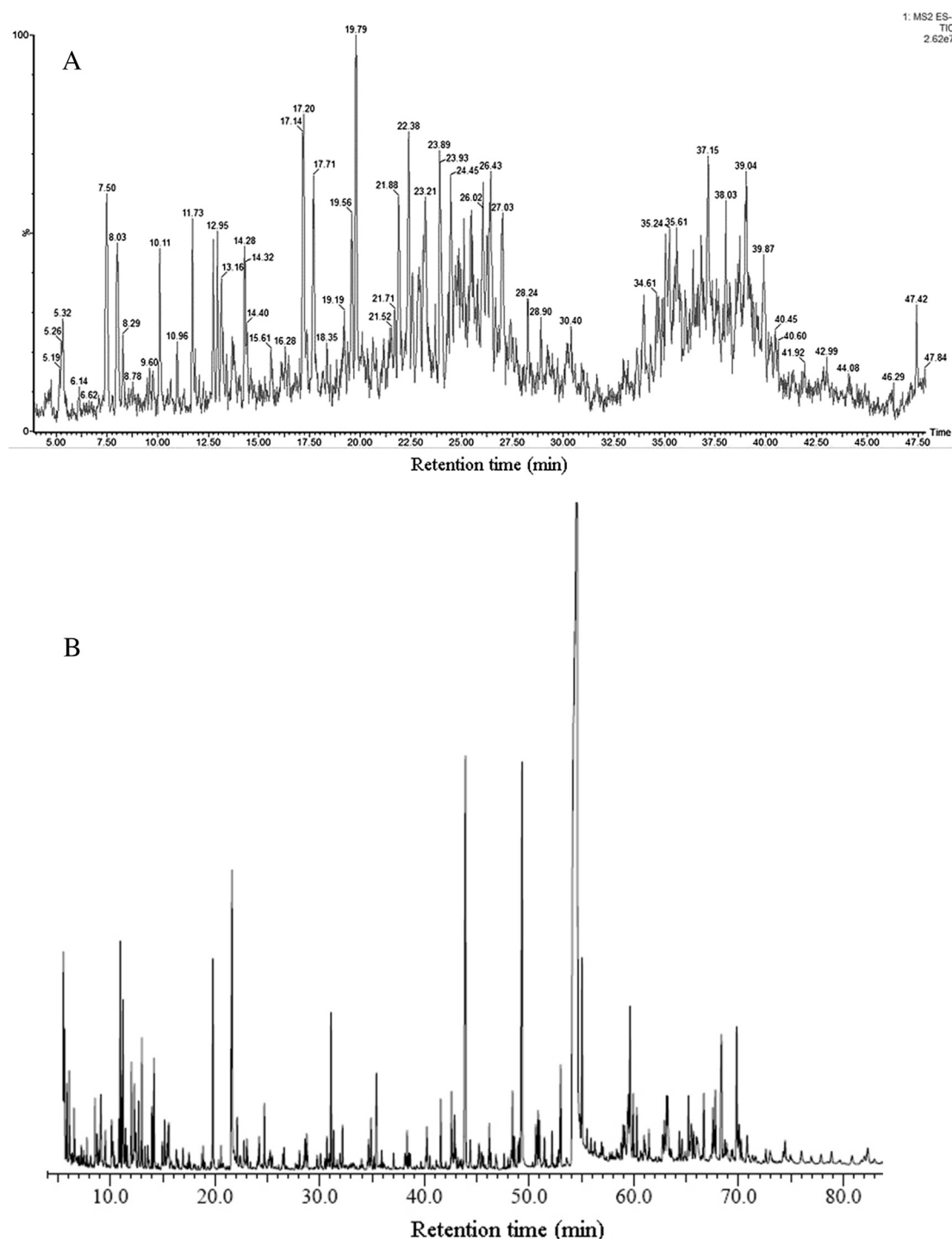
### 2.4. Data analysis

For each sample, the peak heights of metabolites in mass spectra were recorded and averaged over three replicates. An unsupervised multivariate statistical method, principal component analysis (PCA), was used on UV-scaling data by software SIMCA-P version 11.5 (Umetrics, Umeå, Sweden). PCA was performed to visualize the clustering of different samples without any knowledge of their group membership.

## 3. Results

### 3.1. Semipolar metabolites composition identified by UPLC-MS/MS

The methanolic extract of *P. tenuifolia* root was analyzed using UPLC-MS/MS to identify the semipolar metabolites. Fig. 1 shows the full scan ESI-MS spectra in negative mode. The identified chemicals of main peaks are listed in Table 1. Those metabolites with relatively high peaks were interpreted here. The leading peak was tenuifoliside A (retention time, 19.79 minutes; Fig. 2). The MS spectra had an  $[\text{M}-\text{H}]$  at  $m/z$  680.7 and  $[\text{2M}-\text{H}]$  at  $m/z$  1362.7. The fragment ions were interpreted as follows:  $m/z$  442.6 (loss of trimethoxycinnamoyl and hydroxyl group), 281.0 (loss of trimethoxycinnamoyl and fructose), 238.9 (breaking of glucose), and 136.7 (*p*-hydroxy benzoic acid). Peak at 17.16 minutes gave  $[\text{M}-\text{H}]$  and  $[\text{2M}-\text{H}]$  at  $m/z$  752.8 and  $m/z$  1506.9, respectively, which was identified as sibiricose



**Fig. 1 – Ultrahigh-performance liquid chromatography–tandem mass spectrometry and gas chromatography–mass spectrometry profiles of *Polygala tenuifolia* root. (A) Total ion chromatogram analyzed by ultrahigh-performance liquid chromatography–tandem mass spectrometry; (B) total ion chromatogram analyzed by gas chromatography–mass spectrometry.**

A4. Its fragment ion at  $m/z$  223.1 indicated synapic acid, and  $m/z$  546.7 was due to the loss of a synapoyl group. Peak at 22.36 minutes gave  $[M-H]$  and  $[2M-H]$  at  $m/z$  766.8 and  $m/z$  1535.8, respectively. The fragment ions at  $m/z$  528.8 (loss of sinapoyl and hydroxyl),  $m/z$  237.3 (trimethoxy cinnamic acid), and  $m/z$  222.6 (synapic acid) further confirmed this peak as

tenuifolide C. A peak at 12.96 minutes was polygalaxanthone XI (MW 568), a xanthone C-glycoside, which gave an  $[M-H]$  and  $[2M-H]$  at  $m/z$  567.0 and  $m/z$  1134.5, respectively. The fragment ions at  $m/z$  435.1 (loss of apiose),  $m/z$  416.9 (loss of apiose and  $H_2O$ ), and  $m/z$  344.8 (breaking of glucose at 0,3 bonds) further confirmed this structure. 1,2,3,7-Tetramethoxyxanthone (MW

**Table 1 – Semipolar metabolites found in the methanolic extract of *Polygala tenuifolia* root measured by ultrahigh-performance liquid chromatography–tandem mass spectrometry.**

No.	Retention time (min)	MW	[M-H] <sup>−</sup> (m/z)	[2M-H] <sup>−</sup> (m/z)	Fragment ions (m/z)	Chemicals
1	5.29	462	460.9	922.9	299.1, 136.9	Sibiricose A3
2	7.5	518	516.7	1034.9	340.6, 192.8	Arillalose B
3	7.96	548	546.8	1094.8	222.6, 204.9	Sibiricose A6/A1
4	10.11	548	546.9	1094.3	222.8, 204.8	Sibiricose A6/A1
5	10.96	568	566.8		435.2, 314.5	Polygalaxanthone III or VIII
6	11.73	538	536.7		386.7, 266.7	Sibiricaxanthone B
7	12.75	568	566.5		434.8, 314.9	Polygalaxanthone III or VIII
8	12.96	568	567.0	1134.5	435.1, 416.9, 344.8	Polygalaxanthone XI
9	13.16	562	560.7	1123.2	399.0, 341.0, 236.8	Sibiricose A2
10	13.69	256	255.0	511.0	212.9, 168.5	1-Hydroxy-2,3-methylenedioxyxanthone
11	13.77	550	548.8		467.3, 254.9	—
12	14.3	668	666.7	1334.9	461.1, 280.8, 239.1	Tenuifoliside B
13	14.4	754	752.7	1506.7	705.2, 528.5, 205.0	—
14	16.3	582	580.9		549.0, 323.0, 272.7	Polygalaxanthone V
15	16.45	754	752.9	1507.1	705.0, 692.5, 630.8	Telephiose E
16	17.16	754	752.8	1506.9	546.7, 223.1	Sibiricose A4
17	17.71	724	722.7	1447.3	696.5, 546.8, 516.6	Arillanin A
18	19.21	652	650.7		528.8, 222.5, 204.5	Acylsucroses 3'-O-(4-hydroxy-3,5-dimethoxy-E-cinnamoyl), 6-O-benzoyl
19	19.56	1484	1482.8			Tenuifolioside G <sup>a</sup>
20	19.79	682	680.7	1362.7	442.6, 281.0, 238.9, 136.7	Tenuifoliside A
21	21.85	1526	1525.4		688.7	Tenuifolioside F <sup>a</sup>
22	21.9	1496	1494.9			Tenuifolioside L <sup>a</sup>
23	22.36	768	766.8	1535.8	528.8, 237.3, 222.6	Tenuifoliside C
24	22.87	1660	1659.1			Polygalasaponin XLV <sup>a</sup>
25	23.12	1296	1294.8			Tenuifolioside C <sup>a</sup>
26	23.19	738	736.9	1477.5	704.8	Reinioside A <sup>a</sup>
27	23.94	1308	1306.8		1160.8, 163.3, 145.0	Tenuifolioside I
28	24.45	1338	1336.9		894.5, 320.6	Senegose L
29	24.69	1296	1294.9		1118.5, 881.4	Senegose K
30	25.48	1308	1306.8		964.7	Reinioside B <sup>a</sup>
31	26.07	1338	1336.8			Tenuifolioside B <sup>a</sup>
32	26.38	1350	1348.9		1308.4, 1250.1	Polygalasaponin XXXV
33	26.47	1526	1525.2			Tenuifolioside F <sup>a</sup>
34	26.99	1380	1379.0		1336.6, 390.8	Tenuifolioside A
35	39.91	1732	1731.2		1587.8, 425.4	Onjisaponin W
36	47.40	316	314.9		214.4, 116.8	1,2,3,7-Tetramethoxyxanthone

— = unknown; a = possible structure; MW = molecular weight.

316) was detected at 47.40 minutes with [M-H] at  $m/z$  314.9, and fragment ions at  $m/z$  214.4 (loss of  $C_5H_9O_2$ ) and  $m/z$  116.8 (loss of  $C_{10}H_{14}O_4$ ). The chemical structures of the above compounds are shown in Fig. 2. Some other chemicals, including polygalasaponins, xanthenes, and sucrose esters, were also identified, as has been described previously [12–15].

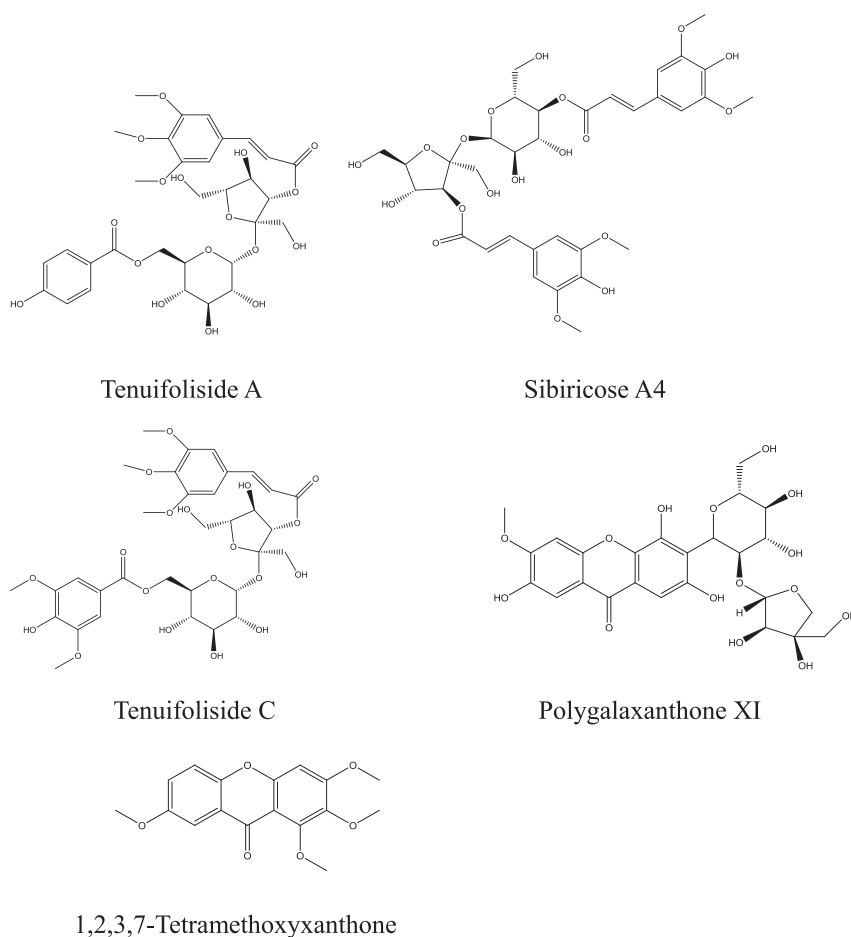
### 3.2. Volatile metabolites composition identified by GC-MS

The volatile metabolites were extracted by hexane/acetone, trimethylsilylated, and determined by GC-MS, which gave 34 volatile compounds, including alcohol, carboxylic acids, esters, and terpenoids (Table 2). The leading volatile chemical was oleic acid in all samples tested. Other volatile compounds with percentage higher than 1% were 2,5-dihydroxy-3,6-bis(hydroxymethyl)-1,4-dioxane, hexadecanoic acid, 9-octadecenoic acid methyl ester, 9,12-octadecadienoic acid, stearic acid, 11-eicosenoic acid, eicosanoic acid, and eicosanoic acid 2-glycerol ester.

### 3.3. PCA of *P. tenuifolia* root based on their metabolites profiles

PCA was conducted on methanolic extract of *P. tenuifolia* root samples. The first two principal components accounted for 75.9% of the total variance, in which the first principal component accounted for 45.8% of the total variance and the second principal component 30.1%. The loading plot (Fig. 3A) revealed the main compounds responsible for the sample difference. The first component was represented by arillalose B, sibiricoses A1, A6, tenuifolisides B, C, arillanin A, 6-O-benzoyl 3'-O-(4-hydroxy-3,5-dimethoxy-E-cinnamoyl) acylsucroses, tenuifolioses A, E, L, polygalasaponin XLV, and reinioside B, which are characterized as saponins and oligosaccharide esters. The second component was mainly defined by 1-hydroxy-2,3-methylenedioxyxanthone, sibiricose A2, tenuifolioses B, F, and G, which were characterized as xanthone and oligosaccharide esters. Score plot showed the statistical similarity between samples. *P. tenuifolia* Root 1 was





**Fig. 2 – Structures of characteristic metabolites in *Polygala tenuifolia* root.**

characterized by large amounts of arillalose B, sibiricose A2, and telephiose E, while Root 3 showed high levels of tenuifoliside B and I. They were located in two opposite quadrants in the score plot, which indicated significant differences. Root 2 was located in the proximity of Root 1 in the score plot.

Fig. 3B shows the results of PCA on volatile metabolites levels. The first two principal components accounted for 81.5% of the total variance, 51.9% by the first component and 29.6% by the second component. Major metabolites defining the first component were propanedioic acid, 2-hydroxyl benzoic acid, hexadecanoic acid, palmitelaidic acid, 9-octadecenoic acid methyl ester, stearic acid, 11-eicosenoic acid, eicosanoic acid, tetracosanoic acid, and eicosanoic acid 2-glycerol ester. The second component was mainly characterized by 5-ethyl-*m*-xylene, 1,2,3,4-tetramethyl-benzene, and 2,3-dihydroxyl-propanoic acid. *P. tenuifolia* Root 1 was characterized by high levels of 5-ethyl-*m*-xylene and 1,2,3,4-tetramethyl-benzene. Root 3 was characterized by high level of 2,3-dihydroxyl-propanoic acid.

## 4. Discussion

### 4.1. Phytochemical profile of *P. tenuifolia* root

Phytochemical analysis is a good way to evaluate the quality of commercial biological resources, such as medicinal herbs and

fruits. At present, LC-MS and GC-MS are two efficient and precise techniques to resolve the phytochemical profile of plant resources [16,17]. The former technique can identify semipolar metabolites with advantages of high precision and short time consumed. It is widely applied to the characterization of plant secondary metabolites. GC-MS can reveal the chemistry nature of volatile metabolites [18], which define the flavor of the plant [19]. GC-MS also provides complementary information to LC-MS analysis to obtain a complete phytochemical profile. From the bioactive compounds profile obtained in this work, it can be concluded that four samples had similar metabolites profiles, but the level of each metabolite varied.

More than 70 metabolites were identified from *P. tenuifolia* root in this study. Three sucrose esters, including sibiricose A4 and tenuifoliside A and C, were detected as the leading metabolites in the UPLC-MS/MS profile. They have been reported as the bioactive compounds responsible for the pharmaceutical effect of *P. tenuifolia* root against depression [20]. Several saponins and xanthones were also detected as important constituents, including 1,2,3,7-tetramethoxyxanthone, 1-hydroxyl-2,3-methylenedioxyxanthone, and polygalaxanthones III, V, and VIII, as well as polygalasaponins XLV and XXXV. Polygalasaponins play a critical role in the characteristic bioactivities of *P. tenuifolia* root, such as neuroprotection and memory improvement. Cognitive dysfunction is a symptom of central nervous system disorder, which endangers the life quality of

**Table 2 – Volatile metabolites occurred in hexane/acetone extract of *Polygala tenuifolia* root determined by gas chromatography–mass spectrometry.**

No.	Retention time (min)	Chemicals
1	5.86	isobutanol
2	6.55	2-ethoxyethyl acetate
3	9.10	2,2',5,5'-tetrahydro-2,2'-bifuran
4	10.95	octyl-3-ol
5	11.44	phenol
6	12.02	propanedioic acid
7	12.29	4-oxo-pentanoic acid
8	12.71	o-cymene
9	13.00	benzenamine
10	13.98	5-ethyl-m-xylene
11	14.16	1,2,3,4-tetramethyl-benzene
12	15.19	2,3-dihydroxyl-propanoic acid
13	22.11	2-benzyl-1,3-dioxolane
14	24.72	decanoic acid
15	31.08	2-hydroxyl benzoic acid
16	34.89	2,3-dimethyl-3-hydroxyglutaric acid
17	38.35	9H-carbazole
18	41.56	undecanedioic acid
19	42.58	cinoxate
20	43.89	2,5-dihydroxy-3,6-bis(hydroxymethyl)-1,4-dioxane
21	48.41	palmitelaidic acid
22	49.29	hexadecanoic acid
23	50.87	9-octadecenoic acid, methyl ester
24	54.34	9,12-octadecadienoic acid
25	54.52	oleic acid
26	55.06	stearic acid
27	59.62	11-eicosenoic acid
28	60.29	eicosanoic acid
29	63.12	isooctyl phthalate
30	65.22	tetracosanoic acid
31	66.68	thymol-glucoside
32	68.38	eicosanoic acid,2-glycerol ester
33	69.82	squalene
34	89.42	22,23-dibromostigmasterol acetate

people. Xue et al [8] pointed out that polygalasaponins can significantly prevent scopolamine-induced cognitive impairments in mice. Even though the numbers and levels of saponins and xanthenes in the UPLC-MS profile were less than oligosaccharide esters (Table 1 and Fig. 1), they work as prerequisites to the health-beneficial effects of *P. tenuifolia* root. GC-MS analysis showed that the major volatile compounds were fatty acids, consistent with the determinations of Wang et al [21]. Among these, oleic acid was the leading volatile metabolite. It is also a pharmacologically active chemical. Although the contribution of volatile compounds to the pharmaceutical activities of *P. tenuifolia* root is much less than nonvolatile compounds, they influence the flavor characteristics to some extent.

Based on the level and importance to the pharmacological functions, the oligosaccharide esters, polygalasaponins and xanthenes identified in the UPLC-MS profile could be selected to evaluate the quality of *P. tenuifolia* root. A *P. tenuifolia* root with relatively high levels of bioactive compounds is considered as having good quality. Through analysis of variance of representative metabolites levels (data not shown), the results indicate that four *P. tenuifolia* roots had no significant differences in the levels of

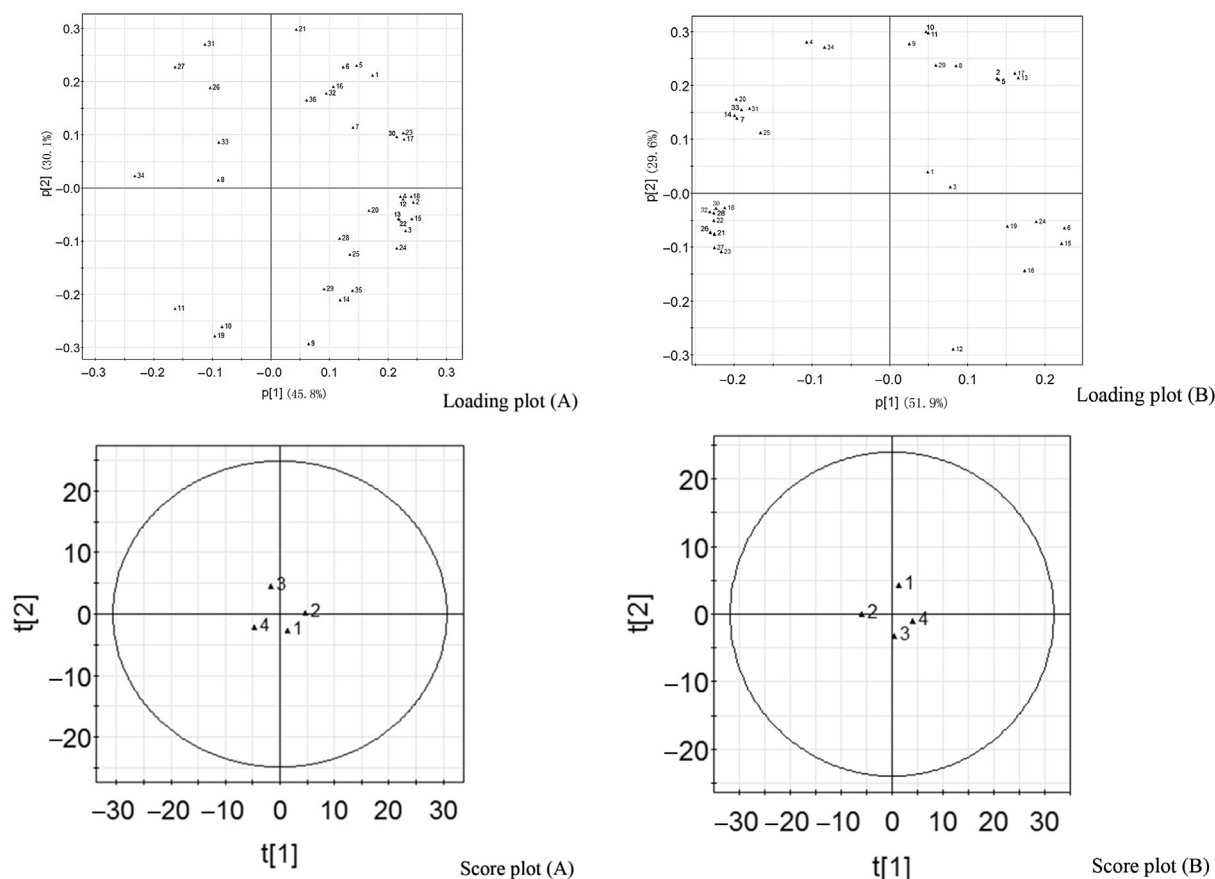
tenuifoliside A, tenuifolioside A, and onjisaponin W. For sibiricoside A4, Root 2 sample showed a significantly ( $p < 0.05$ ) higher level than Root 1, but no significant ( $p > 0.05$ ) differences between Roots 2, 3, and 4 were observed. The results showed that Root 1 had a worse quality compared with the other three samples.

#### 4.2. Multivariate statistical analysis of *P. tenuifolia* root metabolites

PCA is an unsupervised clustering technique for identifying patterns in data, and expressing the data in a way to emphasize their similarities and differences. Through reducing the number of dimensions, it can define a limited number of principal components that describe independent variation in the results [10,22]. In this study, PCA was carried out on semipolar and volatile metabolites of *P. tenuifolia* root to find principal variables defining the pharmacological quality. In the loading plot, it displays the influence of individual spectral peaks in each principal component and describes the separation shown in the score plot [23]. The points in the loading plot far away from zero point represent characteristic markers with most confidence to each group. Fig. 3A shows the characteristic compounds for each sample. The first two principal components accounted for most of the total variance. The first principal components were labeled by tenuifoliosides (A, E, and L) and polygalasaponin XLV. The second principal components were labeled by tenuifoliosides (B, F, and G) and 1-hydroxy-2,3-methylene-dioxyxanthone. It was unexpected that tenuifoliside A had the leading peak in the UPLC-MS profile. However, it was not the representative chemical in the two first principal components due to the insignificant variance. Only those metabolites having significant variance will be calculated in the PCA model. Tenuifoliosides are the characteristic oligosaccharide esters in *P. tenuifolia* root [24], which are constructed by pentasaccharide, phenolic acid, and acetyl moieties. It is very rare to find these oligosaccharides in other plant resources. They show good neuroprotective and antioxidant activities, which make *P. tenuifolia* root a good choice for traditional folk medicine. Seven xanthenes were detected in the UPLC-MS profile, and only 1-hydroxy-2,3-methylenedioxyxanthone was included among the principal components. Xanthenes show good potential for treatment against inflammation, asthma, and allergy [1]. They also exhibit bioactivity against neuroblastoma [25]. Polygalaxanthenes are a type of xanthone characterized by a C-glycoside moiety, which contribute partially to the bioactivity of *P. tenuifolia* root. Through PCA calculation, some oligosaccharide esters, xanthenes, and saponins were selected as principal components. These metabolites can be chosen to determine the quality of commercial *P. tenuifolia* roots, instead of measuring the levels of all metabolites. This result also proved that UPLC-MS/MS and GC-MS were efficient for quality evaluation of medicinal plants [26].

## 5. Conclusion

Analysis of bioactive compounds profile was an efficient way to define the quality of *P. tenuifolia* root. By using UPLC-MS/MS



**Fig. 3** – Plots of PCA on semipolar and volatile metabolites of *Polygala tenuifolia* root. (A) Loading plot and score plot are the results of semipolar metabolites; (B) loading plot and score plot are the results of volatile metabolites.

and GC-MS, the semipolar and volatile metabolites were identified and their levels were statistically compared. Tenifolside A was the leading metabolite in *P. tenuifolia* root. Xanthones and saponins are two other important types of metabolite found in *P. tenuifolia* root. PCA plot indicated the representative metabolites for each sample, and these metabolites could be utilized to judge the commercial quality of *P. tenuifolia* root.

### Conflicts of interest

All authors declare no conflicts of interest.

### Acknowledgments

We are grateful for financial support from Guangdong Natural Science Foundation for Distinguished Young Scholars (No. S2013050014131), Youth Innovation Promotion Association of Chinese Academy of Sciences, Pearl River Science and Technology New Star Fund of Guangzhou (No. 2014J2200081), Guangdong Natural Science Foundation (No. S2011020001156), and International Foundation for Science (No. F/4451-2).

### REFERENCES

- [1] El Sayah M, Cechinel V, Pinheiro TR, Yunes RA, Calixto JB. *In vitro* effect of the extract and the 1,7-dihydroxy-2,3-dimethoxy xanthone from *Polygala cyparissias* on the contractions induced by inflammatory mediators and ovalbumin in normal and actively sensitised trachea from guinea pig. *Inflamm Res* 1999;48:218–23.
- [2] Park HJ, Lee K, He H, Lee M, Kim JW, Whang WW, Kwon YK, Kwon H. Effects of *Polygala tenuifolia* root extract on proliferation of neural stem cells in the hippocampal CA1 region. *Phytother Res* 2008;22:1324–9.
- [3] Hu Y, Liao HB, Liu P, Guo DH, Rahman K. A bioactive compound from *Polygala tenuifolia* regulates efficiency of chronic stress on hypothalamic-pituitary-adrenal axis. *Pharmazie* 2009;64:605–8.
- [4] Ikeya Y, Takeda S, Tunakawa M, Karakida H, Toda K, Yamaguchi T, Aburada M. Cognitive improving and cerebral protective effects of acylated oligosaccharides in *Polygala tenuifolia*. *Biol Pharm Bull* 2004;27:1081–5.
- [5] Yang B, Chen F, Hua YL, Huang SS, Lin S, Wen L, Jianga Y. Prooxidant activities of quercetin, p-coumaric acid and their derivatives analysed by quantitative structure-activity relationship. *Food Chem* 2012;131:508–12.
- [6] Zhu QQ, Jiang YM, Lin S, Wen L, Wu D, Zhao M, Chen F, Jia Y, Yang B. Structural identification of (1→6)- $\alpha$ -D-glucan, a key responsible for the health benefits of longan, and evaluation of anticancer activity. *Biomacromolecules* 2013;14:1999–2003.



- [7] Klein LC, de Andrade SF, Cechinel V. A pharmacognostic approach to the *Polygala* genus: phytochemical and pharmacological aspects. *Chem Biodivers* 2012;9:181–209.
- [8] Xue W, Hu JF, Yuan YH, Sun JD, Li BY, Zhang DM, Li CJ, Chen NH. Polygalasaponin XXXII from *Polygala tenuifolia* root improves hippocampal-dependent learning and memory. *Acta Pharm Sinic* 2009;30:1211–9.
- [9] Na Y. Recent cancer drug development with xanthone structures. *J Pharm Pharmacol* 2009;61:707–12.
- [10] Bernillon S, Biais B, Deborde C, Maucourt M, Cabasson C, Gibon Y, Hansen TH, Husted S, de Vos RCH, Mumm R, Jonker H, Ward JL, Miller SJ, Baker JM, Burger J, Tadmor Y, Beale MH, Schjoerring JK, Schaffer AA, Rolin D, Hall RD, Moing A. Metabolomic and elemental profiling of melon fruit quality as affected by genotype and environment. *Metabolomics* 2013;9:57–77.
- [11] Yang B, Jiang YM, Zhao MM, Chen F, Wang R, Chen Y, Zhang D. Structural characterisation of polysaccharides purified from longan (*Dimocarpus longan* Lour.) fruit pericarp. *Food Chem* 2009;115:609–14.
- [12] Dao TT, Dang TT, Nguyen PH, Kim E, Thuong PT, Oh WK. Xanthones from *Polygala karensium* inhibit neuraminidases from influenza A viruses. *Bioorg Med Chem Lett* 2012;22:3688–92.
- [13] Fu J, Zuo L, Yang JZ, Chen R, Zhang D. Oligosaccharide polyester and triterpenoid saponins from the roots of *Polygala japonica*. *Phytochemistry* 2008;69:1617–24.
- [14] Zhang DM, Miyase T, Kuroyanagi M, Umehara K, Noguchi H. Polygalasaponins XLII–XLVI from roots of *Polygala glomerata*. *Phytochemistry* 1998;47:459–66.
- [15] Ling Y, Li ZX, Chen MC, Sun Z, Fan M, Huang C. Analysis and detection of the chemical constituents of *Radix polygalae* and their metabolites in rats after oral administration by ultrahigh-performance liquid chromatography coupled with electrospray ionization quadrupole time-of-flight tandem mass spectrometry. *J Pharmaceut Biomed* 2013;85:1–13.
- [16] Mari A, Lyon D, Fagner L, Montoro P, Piacente S, Wienkoop S, Egelhofer V, Weckwerth W. Phytochemical composition of *Potentilla anserina* L. analyzed by an integrative GC-MS and LC-MS metabolomics platform. *Metabolomics* 2013;9:599–607.
- [17] Chen RC, Wei KJ, Wang TM, Yu YM, Li JY, Lee SH, Wang WH, Ren TJ, Tsai CW. Simultaneous quantification of antibiotic dyes in aquatic products and feeds by liquid chromatography-tandem mass spectrometry. *J Food Drug Anal* 2013;21:339–46.
- [18] Chen HC, Peng LW, Sheu MJ, Lin LY, Chiang HM, Wu CT, Wu CS, Chen YC. Effects of hot water treatment effects on the essential oils of calamondin. *J Food Drug Anal* 2013;21:363–8.
- [19] Besada C, Sanchez G, Salvador A, Granell A. Volatile compounds associated to the loss of astringency in persimmon fruit revealed by untargeted GC-MS analysis. *Metabolomics* 2013;9:157–72.
- [20] Hu Y, Liao HB, Dai-Hong G, Liu P, Wang YY, Rahman K. Antidepressant-like effects of 3,6-disinapoyl sucrose on hippocampal neuronal plasticity and neurotrophic signal pathway in chronically mild stressed rats. *Neurochem Int* 2010;56:461–5.
- [21] Wang Y, Chang L, Zhao X, Meng X, Liu Y. Gas chromatography–mass spectrometry analysis on compounds in volatile oils extracted from Yuan Zhi (*Radix polygalae*) and Shi Chang Pu (*Acorus tatarinowii*) by supercritical CO<sub>2</sub>. *J Trad Chinese Med* 2012;32:459–64.
- [22] Park MK, Cho IH, Lee S, Choi HK, Kwon DY, Kim YS. Metabolite profiling of Cheonggukjang, a fermented soybean paste, during fermentation by gas chromatography-mass spectrometry and principal component analysis. *Food Chem* 2010;122:1313–9.
- [23] Yuk J, McIntyre KL, Fischer C, Hicks J, Colson KL, Lui E, Brown D, Arnason JT. Distinguishing Ontario ginseng landraces and ginseng species using NMR-based metabolomics. *Anal Bioanal Chem* 2013;405:4499–509.
- [24] Miyase T, Iwata Y, Ueno A. Tenuifolioses A–F, oligosaccharide multi-esters from the roots of *Polygala tenuifolia* Willd. *Chem Pharm Bull* 1991;39:3082–4.
- [25] Mak NK, Li WK, Zhang M, Wong RN, Tai LS, Yung KK, Leung HW. Effects of euxanthone on neuronal differentiation. *Life Sci* 2000;66:347–54.
- [26] Yang B, Yang HS, Chen F, Hua YL, Jiang YM. Phytochemical analyses of *Ziziphus jujuba* Mill. var. *spinosa* seed by ultrahigh performance liquid chromatography-tandem mass spectrometry and gas chromatography-mass spectrometry. *Analyst* 2013;138:6881–8.